



## Four-post racks and cable management



### Flexibility when you need it

Whether you're working in a network closet, server room or data center, a few common needs exist where enclosures are concerned: accessibility to equipment, sufficient airflow, design flexibility and cable management, to name a few. Ultimately, you need a way to secure and protect your equipment while also keeping things organized.

Eaton's® four-post rack addresses these needs and more. It provides the primary mounting and cabling infrastructure for a range of accessories including UPSs, ePDUs® (rack PDUs) and cable managers and can handle a heavier load than a two-post rack (2,000 lb. vs. 1,200 lb.). The rack's adjustable depth, pre-drilled upper cross and attachment members and universal hole pattern also make it adaptable to your unique set-up – all at a lower cost than a full enclosure with doors.



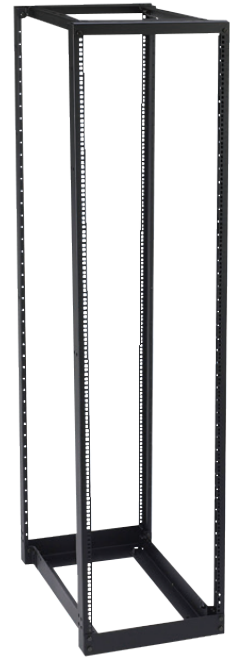
*Powering Business Worldwide*

# Four-post racks

## Features

- Provides nearly 360 degrees of accessibility and unrestricted airflow
- Ships unassembled for cost effective logistics and assembles quickly using standard hand tools
- Allows for depth adjustments in one-inch increments (30-36 in.)
- Includes permanently stamped rack-mount unit (U) markings
- Comes in a 45U height (84 inches)
- Has EIA/ECA-310-E universal hole patterns
- Complements any data center with its aluminum (uprights) and steel (cross and adjustment members) construction and flat black powder coat
- Holds up to repeated relocation with its simple, durable design
- Accommodates UPS, ePDU, cable management equipment and other accessories
- Meets UL60950 Standard (UL E171936)

**Four-post racks provide the primary mounting and cabling infrastructure for a range of accessories including UPSs, ePDUs and cable managers and can handle a heavier load than a two-post rack (2,000 lb. vs. 1,200 lb.).**



Eaton's four-post racks (shown on right) complement any server room set-up and can accommodate a range of equipment and accessories.

# Cable management



## Vertical cable managers – single- and double-sided

Vertical cable managers provide cable management between racks. Available as single- or double-sided, hinging removable gates offer quick and easy installation.

Both options feature closely spaced fingers to manage high density cabling on the rack and between racks. Providing cable management at every U height in the rack, the one-piece full length doors allow for quick opening from either side and snap gates keep cabling in place.

Cable manager features	Single-sided	Double-sided
Vertical cabling section	1	2
Door	1	2
Retention gates	3	6
Push in fasteners	25	50
Cable strap mounts	6	12
Cable retainer bars	2	4
Mounting hardware	1 set	1 set



## Accessories

### Fixed and adjustable ePDU rack support brackets

Mount up to three ePDUs to standard rack upright.

### Double shelf

Supports up to a 200-pound load, ideal for large devices such as monitors or laptops. Requires 4U of mounting space.

### Single solid shelf

Supports up to a 100-pound load, ideal for monitor or laptop storage. Requires 3U of mounting space.

### Single vented shelf

Supports up to a 100-pound load, ideal for monitor or laptop storage. Requires 3U of mounting space.



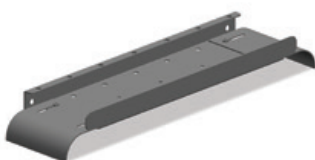
## Horizontal rack-mount cable managers

Horizontal cable managers with snap-on removable doors are available in 1U, 2U and 3U sizes.



## Finger brackets

Four-inch finger brackets install directly onto the rack frame to help manage cabling. Fingers align with U designations.



## Cable transition trays

Cable trays provide a support system for cables and raceways, guiding them from rack to rack and over walkways. Our robust trays offer adjustable horizontal cable management for patch cords and jumpers, as well as aluminum construction with rounded waterfall edges.

## Four-post racks and accessories selection guide

### Four-post racks

Catalog number	Description	Height (in.)	Width (in.)	Depth (in.)	Weight (lb.)
SB838084CFB	Four-post adjustable rack (45U)	84	19	30-36	59.5

### Cable management – vertical

Catalog number	Description	Fits rack (in.)	Height (in.)	Width (in.)	Weight (lb.)
SB86083S084FB	Single-sided cable manager	84	84	3	24.2
SB86083D084FB	Double-sided cable manager	84	84	3	45.3
SB86FSFB	Cable manager finger bracket		11U	4	0.9
SB86FSKFB	Replacement finger bracket section, includes hardware		11U		0.6
SB57163S084FB	Single-sided cabling section	84	6.4	3.6	8
SB57163D084FB	Double-sided cabling section	84	12.8	3.6	24
SB571GROMMETKIT	Grommet kit				
SB571BUSHINGKIT	Bushing kit				

### Cable management – horizontal

Catalog number	Description	Height (in.)	Width (in.)	Weight (lb.)
SB87019S1FB	1U horizontal cable manager	1U	19	2.1
SB87019S2FB	2U horizontal cable manager	2U	19	2.5
SB87019S3FB	3U horizontal cable manager	3U	19	2.8
SB81319TT6FB	Top cable transition tray	6	19	4
SB81319UT6FB	Upper cable transition tray	6	19	4

### Shelving accessories

Catalog number	Description	Height (rack U)	Depth (in.)	Weight (lb.)
SB596S19103SFB	Steel double-sided shelf for three-inch uprights	4	20	14
SB596S19106SFB	Steel double-sided shelf for six-inch uprights	4	20	14
SB747S19155FB	Steel, 15-inch deep single solid shelf	3	15	11
SB747V19155FB	Steel, 15-inch deep single vented shelf	3	15	9.2
SB3010	Fixed ePDU support bracket	4.82 (in.)	1.75	1
SB3011	Adjustable ePDU support bracket	3.5 (in.)	1.13	1

To learn more about Eaton four-post racks, please visit:  
[Eaton.com/enclosures](http://Eaton.com/enclosures)

**Eaton**  
 1000 Eaton Boulevard  
 Cleveland, OH 44122 USA  
 Eaton.com

© 2014 Eaton  
 All Rights Reserved  
 Printed in USA  
 BR159009EN / GG  
 August 2014

Eaton and ePDU are registered trademarks  
 of Eaton.

All other trademarks are property  
 of their respective owners.